



## 6105 dusk light cove

- 5 bedroom
- 5 bath + powder
- 5839 sqft
- modern estate

to be built w/builder financing

**\$3,295,000**

for more information contact:

**Bruce Herve**

Vice President Sales & Field Operations

512-934-0800 (C)

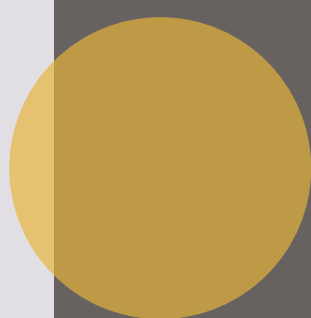
**Wesley Parks, AIA, NCARB**

Director of Architecture

432-816-1502 (C)

13301 galleria circle, suite b175  
bee cave, tx 78738  
512-347-9956 (o)

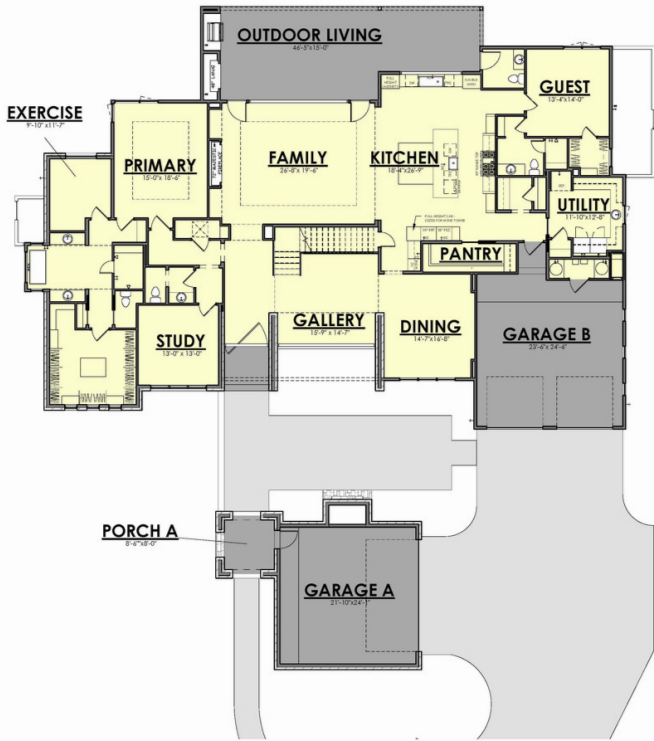
[www.buildconfident.com](http://www.buildconfident.com)



## madrone canyon

Located in the exemplary Lake Travis ISD and the new Madrone Canyon neighborhood with ease of access to the heart of Lakeway and HWY 71. Neighborhood amenities include gated access, community pavilion, and extensive landscaping.

# Floorplan



©Eppright Homes, LLC

Sq.Ftg.Areas	S.F.	Mas.
Main Floor Heated	3856	49
Upstairs Floor Heated	1934	0
Total Heated	5790	49
Garage	1191	49
Main Floor Exterior Covered	756	
Total Frame	7737	
Slab Footage	5901	
Roof	5901	
Conditioned Footage		5839

# Rear Elevation



6105 dusk light cove

5839 sqft

## Neighborhood

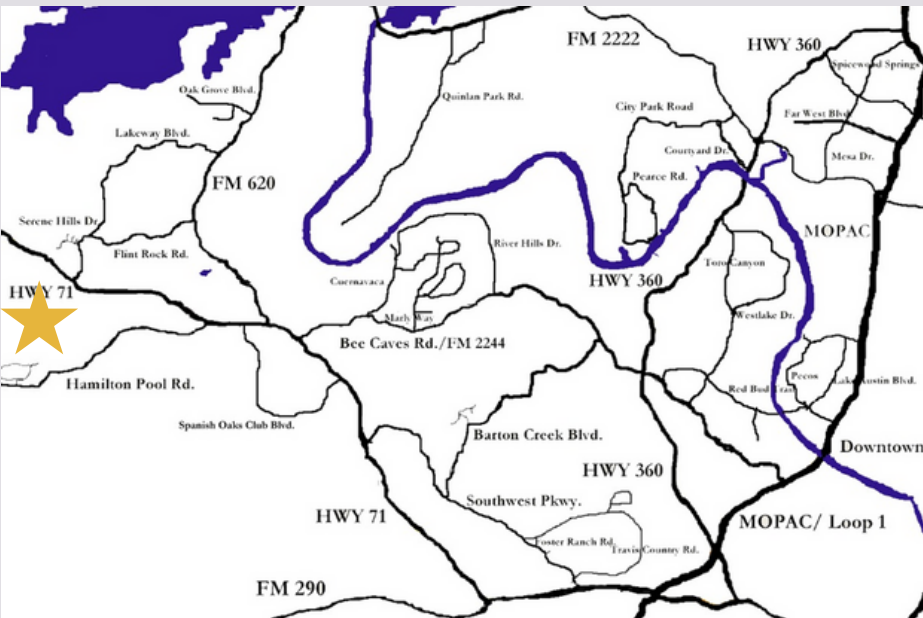
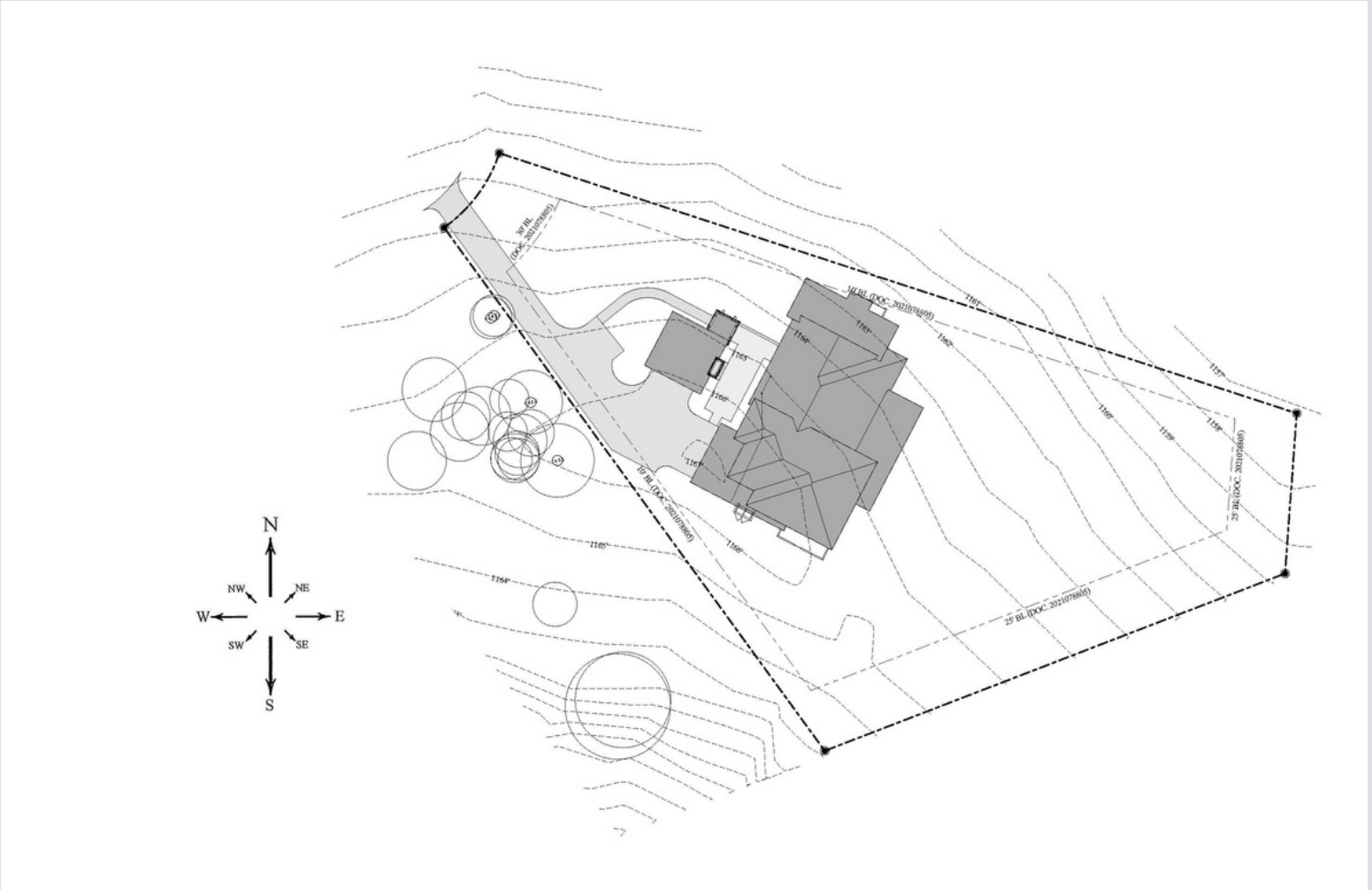
- Pedernales Electric, Lazy Nine MUD Water and Wastewater; Texas Gas Service Natural Gas and AT&T or Time Warner Cable for Cable and Internet
- Central Sewer and Water Service
- Award Winning Lake Travis ISD currently serving the area: Bee Cave Elementary, Bee Cave Middle School, & Lake Travis High School

**Tax Rate:** 2.562547 per \$100: (Lake Travis ISD - 1.074100, Travis County - 0.304655, Travis Emerg SVC #6 - 0.083100, Travis Co. Healthcare - 0.100692, Lazy Nine MUD - 1.00)

## The Home

- Engineered slab on grade foundation
- Concrete tile roof with 24" Gauge Berridge standing seam metal roof accents
- Stone and stucco exterior
- Pella Lifestyle full light patio doors
- Pella Lifestyle wood, aluminum clad windows
- Custom made steel entry door
- Landscape package includes sprinkler, sod and plantings
- Custom architecturally site-specific design
- **Backyard gathering space with fireplace**
- Hot water supply with circulation system that delivers virtually instant hot water at all taps
- Quality plumbing fixtures
- 3 zone Bryant Evolution air conditioning SEER2 17+ and NATURAL gas furnaces
- High speed RGS6 cable & Cat 5 telephone wiring, complete security system, and generous light fixture package
- Custom made cabinetry featuring natural granite or quartz surface counters in Kitchen, Master & Powder baths with under mounted sinks
- Gas slot fireplace in the Great Room
- Custom flooring throughout featuring stained hardwood flooring, quality porcelain tile and luxurious carpet
- Signature Kitchen Suites State of the Art appliance package including 36" Dual Fuel Range top with Sous Vide, and Induction, 2 All Stainless Dishwashers, 30" Double Wall Oven, 30" All Refrigerator Tower, 30" All Freezer Tower, 24" Under Counter Wine Refrigerator, 36" BBQ Outdoor Grill, and Stainless Doors.
- Appliance Design Guide available at <https://www.signaturekitchensuite.com/us/download#/>

**5 bedroom, 5 full, powder & patio bath, modern estate**



For more information  
call (512) 347-9956  
or visit  
[buildconfident.com](http://buildconfident.com)



Information deemed accurate but not reliable. Buyer must verify. Custom home renderings are an artist's rendition only. While we attempt to create a realistic representation of the home, variations occur between the rendering and what is actually built.